

# Systema®

**ALWI:**

Unterkonstruktionen für Aluminium-Profiltafeln und ebene Fassadenplatten

# 01



**ALWI:**

holding tracks for profiled aluminium sheets and flat wall panels

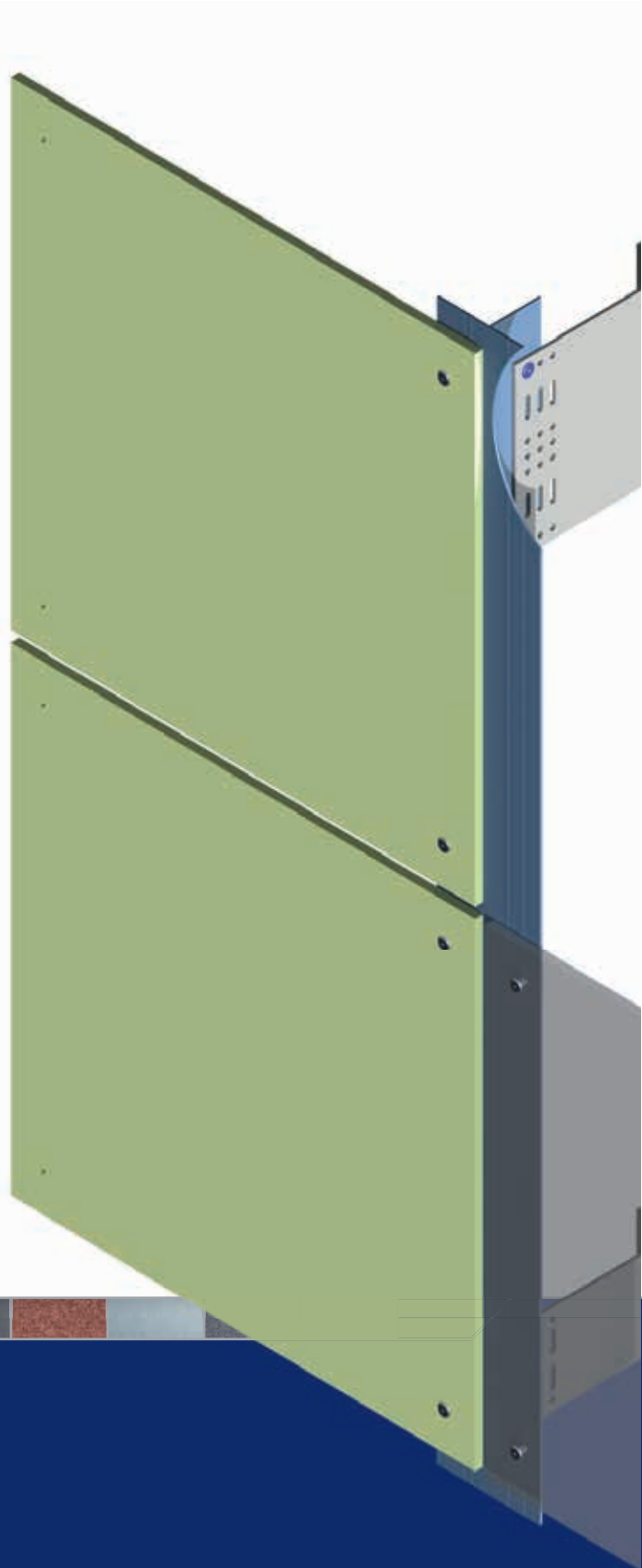
**ALWI:**

ossature pour des plaques en alu et composants

**ALWI:**  
Unterkonstruktionen für Aluminium-Profiltafeln  
und ebene Fassadenplatten

**ALWI:**  
holding tracks for profiled aluminium  
sheets and flat wall panels

**ALWI:**  
ossature pour des plaques en alu  
et composants



## Inhaltsverzeichnis Contents Index

System: **ALWI**  
Unterkonstruktionen für Aluminium-Profiltafeln und ebene  
Fassadenplatten

System: **ALWI**  
holding tracks for profiled aluminium sheets and flat wall panels

Système: **ALWI**  
ossature pour des plaques en alu et composants

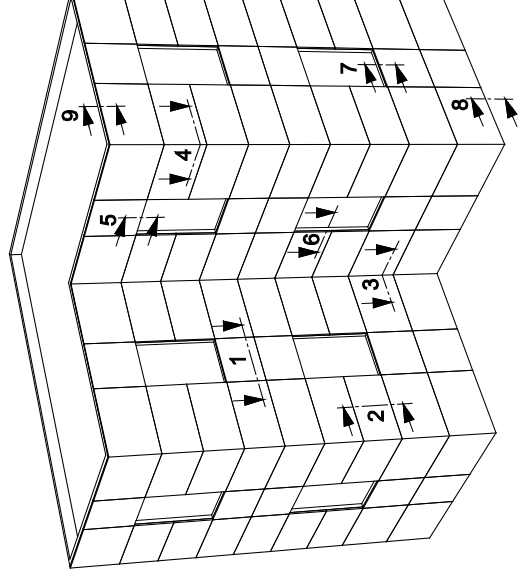
Seite page page	Schnittübersicht isometric view	summary of sections isometric view	vue d'ensemble dessin isométrique
01.02	Schnitt horizontal section horizontal	summary of sections section horizontal	vue d'ensemble dessin isométrique
01.03	Schnitt vertikal section vertical	summary of sections section vertical	vue d'ensemble dessin isométrique
01.04	Innenecke internal corner	summary of sections internal corner	vue d'ensemble dessin isométrique
01.05	Außenecke external corner	summary of sections external corner	vue d'ensemble dessin isométrique
01.06	Fenstersturz window lintel	summary of sections window lintel	vue d'ensemble dessin isométrique
01.07	Jalousienkasten shutter case	summary of sections shutter case	vue d'ensemble dessin isométrique
01.08	Fensterlaibung window recess	summary of sections window recess	vue d'ensemble dessin isométrique
01.09	Fensterbank windowsill	summary of sections windowsill	vue d'ensemble dessin isométrique
01.10	Sockelabschluss bottom closure	summary of sections bottom closure	vue d'ensemble dessin isométrique
01.11	Attikaabschluss parapet	summary of sections parapet	vue d'ensemble dessin isométrique
01.12	Profilübersicht ALWI profile list ALWI	summary of sections profile list ALWI	vue d'ensemble dessin isométrique
01.13	ensemble de profil ALWI	summary of sections ensemble de profil ALWI	vue d'ensemble dessin isométrique

## ALWI

Schnittübersicht

summary of sections

vue d'ensemble



Schnitt 1: horizontal  
Schnitt 2: vertikal  
Schnitt 3: Innenecke  
Schnitt 4: Außenecke  
Schnitt 5: Fenstersturz  
Schnitt 6: Fensterlaibung  
Schnitt 7: Fensterbank  
Schnitt 8: Sockelabschluss  
Schnitt 9: Attikaabschluss

section 1: horizontal  
section 2: vertical  
section 3: internal corner  
section 4: external corner  
section 5: window lintel  
section 6: window recess  
section 7: windowsill  
section 8: bottom closure  
section 9: parapet

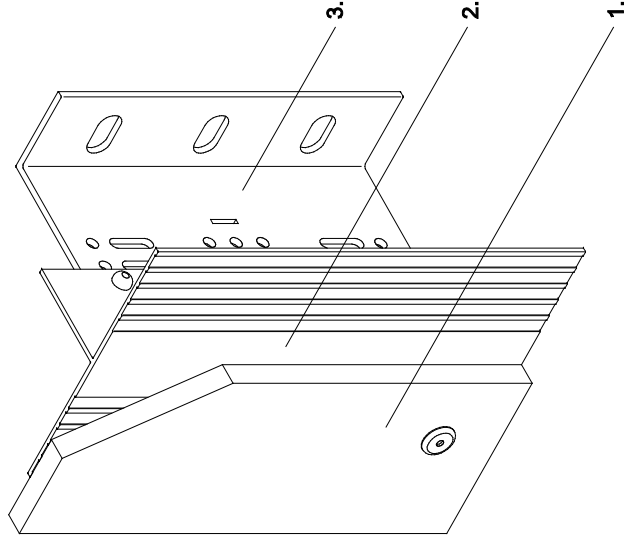
coupe 1: horizontale  
coupe 2: verticale  
coupe 3: coin intérieur  
coupe 4: coin extérieur  
coupe 5: linteau  
coupe 6: joue de fenêtre  
coupe 7: bavette de  
fenêtre extérieure  
coupe 8: tôle basse de  
cafeutrement (raccord de  
socle)  
coupe 9: couvre-mur

## ALWI

Unterkonstruktionen  
für Aluminium-  
Profiltafeln und ebene  
Fassadenplatten

holding tracks for  
profiled aluminium  
sheets and flat wall  
panels

ossature pour des plaques  
en alu et composants



1. Fassadenbekleidung
2. senkrechtes Tragprofil
3. Systea L-Wandkonsole

1. revêtement de façade
2. profil support vertical
3. équerre en L Systea

## Schnitt 1 horizontal

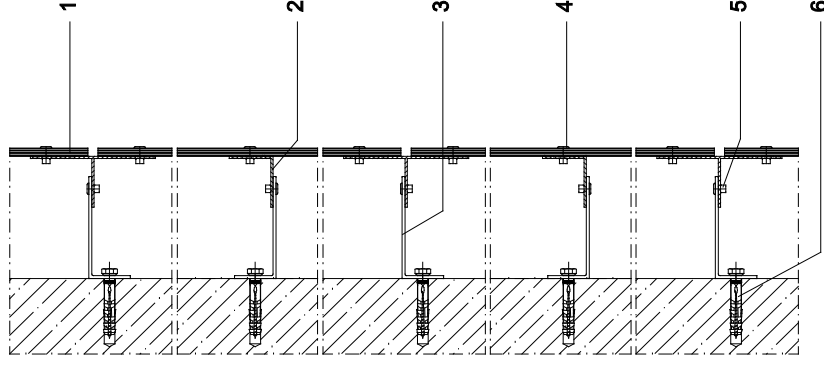
Anordnung der  
Wandkonsolen

## section 1 horizontal

placement of brackets

## coupe 1 horizontale

règlement des équerres



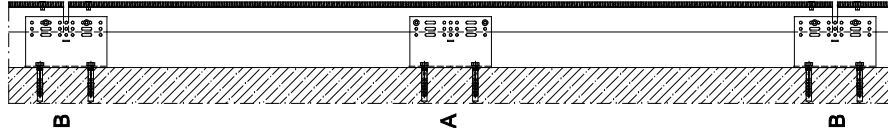
1. Fassadenbekleidung
2. senkrechtes Tragprofil
3. Systea L-Wandkonsole
4. Befestigungsniel
5. Verbindungsniel
6. Verankerung

1. cladding panel
2. vertical holding track
3. Systea L-bracket
4. fixing rivet
5. connecting rivet
6. fixing

1. revêtement de façade
2. profil support vertical
3. équerre en L Systea
4. rivet de fixation
5. jonction
6. ancrage

## Schnitt 2 vertikal

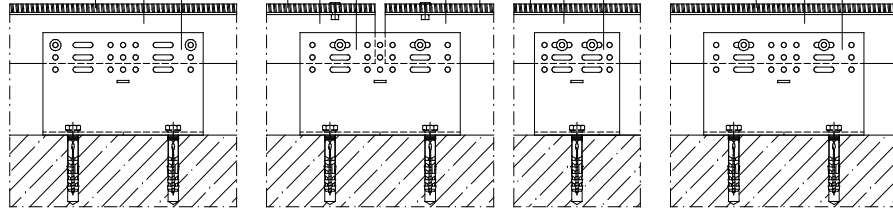
Fest- und Gleitpunkte



1. Fassadenbekleidung
2. senkrechtcs Tragprofil
3. Systea L-Wandkonsole

## section 2 vertikal

fixed and floating  
points



1. cladding panel
2. vertical holding track
3. Systea L-bracket

## coupe 2 verticale

point fixe et glissant

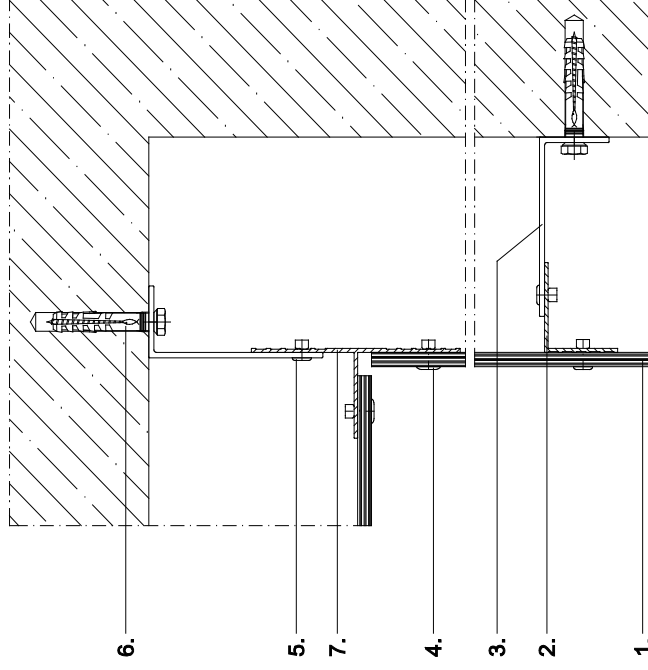
<p><b>A</b></p> <p><b>Festpunkt</b> Aufnahme des Eigengewichts durch Nieten im Rundloch</p> <p><b>A</b></p> <p><b>fixed point</b> dead weight is borne by rivets in round hole</p> <p><b>A</b></p> <p><b>point fixe</b> réception du propre poids rivetage dans le trou rond</p>	<p><b>B</b></p> <p><b>Gleitstoßpunkt</b> Tragprofilis in der horizontalen Plattenfuge, Vernietung in Langlöchern</p> <p><b>B</b></p> <p><b>floating point on the joint</b> profile edge in horizontal panel joint, riveting in long holes</p> <p><b>B</b></p> <p><b>point glissant au joint</b> rivetage dans le trou oblong</p>	<p><b>C</b></p> <p><b>Gleitpunkt</b> Vernietung in Langlöchern, ermöglicht Längenausdehnung mit Niederstanzlehre</p> <p><b>C</b></p> <p><b>floating point</b> riveting in long holes allows expansion</p> <p><b>C</b></p> <p><b>point glissant</b> rivetage dans le trou oblong permet l'extension de la façade rivetage avec rondelle dans le trou oblong</p>
----------------------------------------------------------------------------------------------------------------------------------------------------------------------------------------------------------------------------------------------------------------------------------------------	----------------------------------------------------------------------------------------------------------------------------------------------------------------------------------------------------------------------------------------------------------------------------------------------------------------------------------------------	----------------------------------------------------------------------------------------------------------------------------------------------------------------------------------------------------------------------------------------------------------------------------------------------------------------------------------------------------------------------------

1. revêtement de façade
2. profil support vertical
3. équerre en L Systea

## Schnitt 3 Innenecke

section 3  
internal corner

coupe 3  
coin intérieur



1. Fassadenbekleidung
2. senkrechtcs Tragprofil
3. Systea L-Wandkonsole
4. Befestigungsniel
5. Verbindungsniel
6. Verankerung
7. T-Profil 100/50 prof.

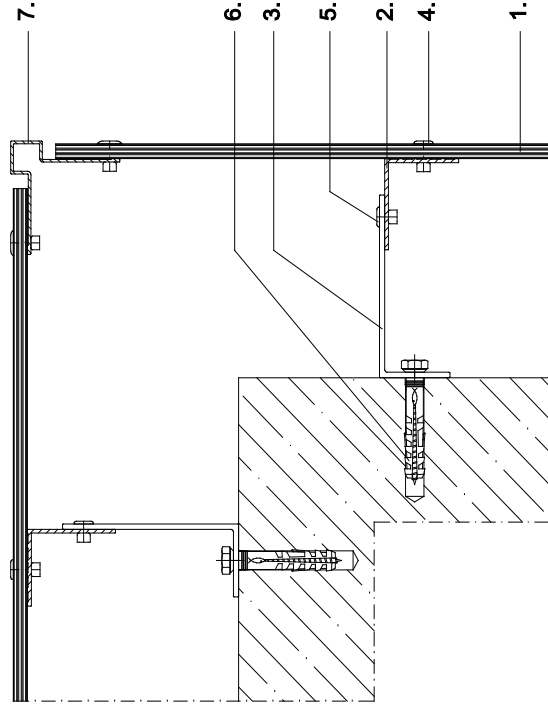
1. cladding panel
2. vertical holding track
3. Systea L-bracket
4. fixing rivet
5. connecting rivet
6. fixing
7. T-profile 100/50 prof.

1. revêtement de façade
2. profil support vertical
3. équerre en L Systea
4. rivet de fixation
5. jonction
6. ancrage
7. profil T 100/50 prof.

**Schnitt 4**  
Außenecke

**section 4**  
external corner

**coupe 4**  
coin extérieur



1. Fassadenbekleidung
2. senkrechtes Tragprofil
3. Systea L-Wandkonsole
4. Befestigungsniel
5. Verbindungsniel
6. Verankerung
7. Außenecke, eckig squared

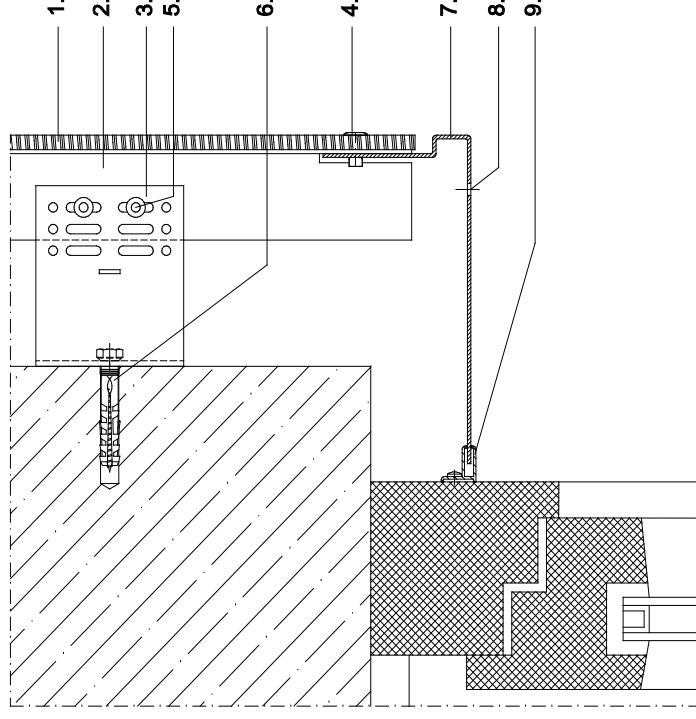
1. cladding panel
2. vertical holding track
3. Systea L-bracket
4. fixing rivet
5. connecting rivet
6. fixing
7. outward corner profile squared

1. revêtement de façade
2. profil support vertical
3. équerre en L Systea
4. rivet de fixation
5. jonction
6. ancrage
7. coin extérieur carré

**Schnitt 5**  
Fenstersturz

**section 5**  
window lintel

**coupe 5**  
linteau



1. Fassadenbekleidung
2. senkrechtes Tragprofil
3. Systea L-Wandkonsole
4. Befestigungsniel
5. Verbindungsniel
6. Verankerung
7. Fensterzarge
8. Belüftungsöffnung
9. Systea Stimmgabelprofil

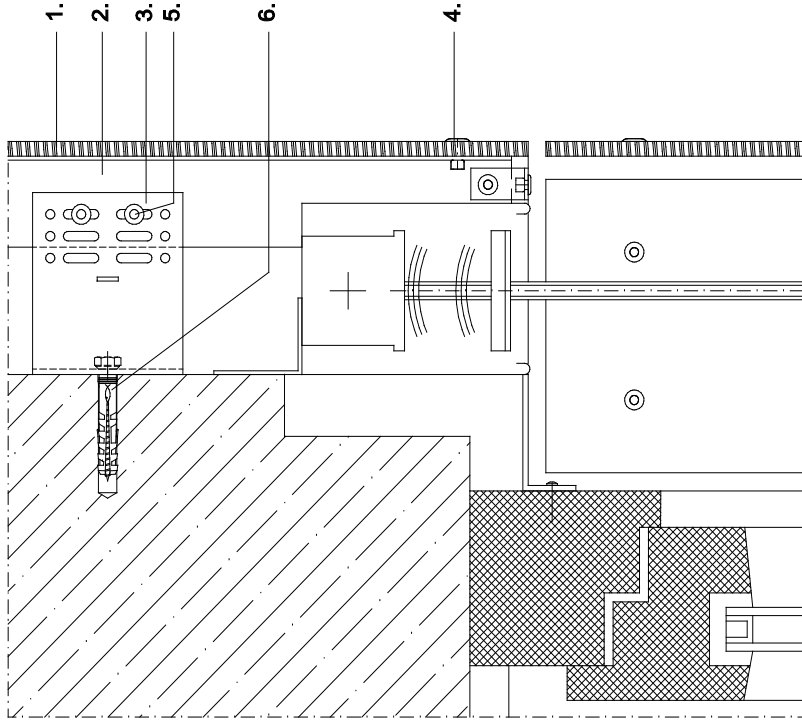
1. cladding panel
2. vertical holding track
3. Systea L-bracket
4. fixing rivet
5. connecting rivet
6. fixing
7. window frame
8. ventilation opening
9. Systea F-profile

1. revêtement de façade
2. profil support vertical
3. équerre en L Systea
4. rivet de fixation
5. jonction
6. ancrage
7. châssis
8. trou pour ventilation
9. profil F Systea (diapason)

**Schnitt 5**  
Jalousienkasten

**section 5**  
shutter case

**coupe 5**  
carter persienne



- 1. Fassadenbekleidung
- 2. senkrechtcs Tragprofil
- 3. Systea L-Wandkonsole
- 4. Befestigungsniel
- 5. Verbindungsniel
- 6. Verankerung

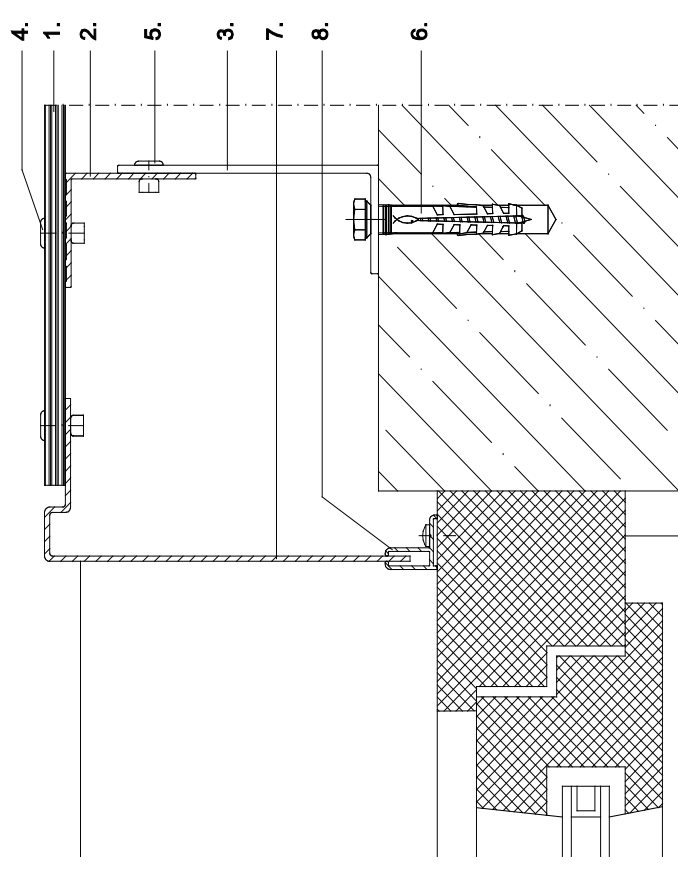
- 1. cladding panel
- 2. vertical holding track
- 3. Systea L-bracket
- 4. fixing rivet
- 5. connecting rivet
- 6. fixing

- 1. revêtement de façade
- 2. profil support vertical
- 3. équerre en L Systea
- 4. rivet de fixation
- 5. jonction
- 6. ancrage

**Schnitt 6**  
Fensterlaibung

**section 6**  
window recess

**coupe 6**  
joue de fenêtre



- 1. Fassadenbekleidung
- 2. senkrechtcs Tragprofil
- 3. Systea L-Wandkonsole
- 4. Befestigungsniel
- 5. Verbindungsniel
- 6. Verankerung
- 7. Fensterzarge
- 8. Systea Stimmgabelprofil

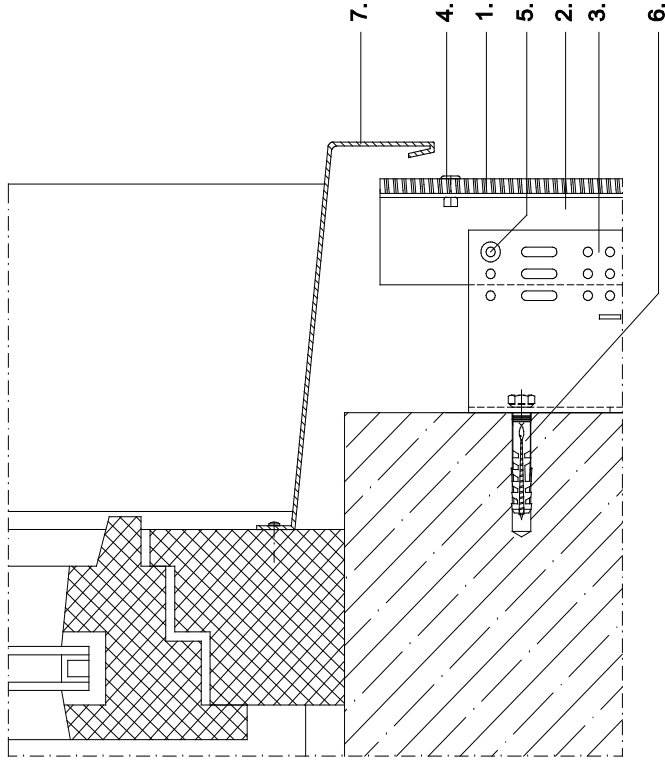
- 1. cladding panel
- 2. vertical holding track
- 3. Systea L-bracket
- 4. fixing rivet
- 5. connecting rivet
- 6. fixing
- 7. window frame
- 8. Systea F-profile

- 1. revêtement de façade
- 2. profil support vertical
- 3. équerre en L Systea
- 4. rivet de fixation
- 5. jonction
- 6. ancrage
- 7. châssis
- 8. profil F Systea (diapason)

**Schnitt 7**  
Fensterbank

**section 7**  
windowsill

**coupe 7**  
bavette de fenêtre  
extérieure



1. Fassadenbekleidung
2. senkrechtcs Tragprofil
3. Systea L-Wandkonsole
4. Befestigungsniel
5. Verbindungsniel
6. Verankerung
7. Systea Fensterbank

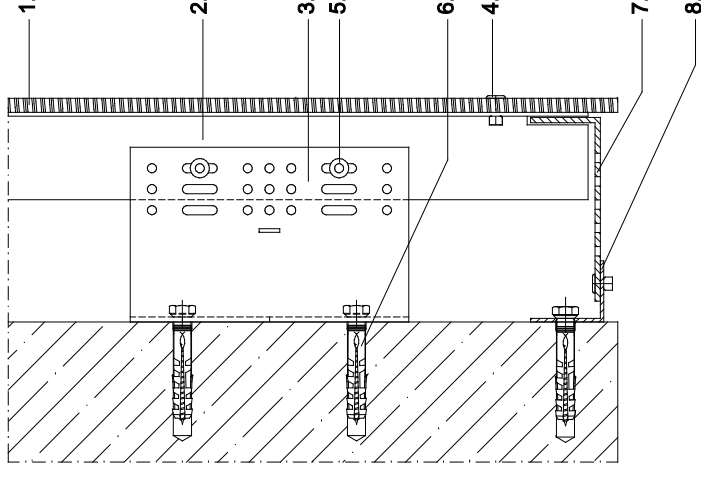
1. cladding panel
2. vertical holding track
3. Systea L-bracket
4. fixing rivet
5. connecting rivet
6. fixing
7. Systea windowsill

1. revêtement de façade
2. profil support vertical
3. équerre en L Systea
4. rivet de fixation
5. jonction
6. ancrage
7. bavette Systea

**Schnitt 8**  
Sockelabschluss

**section 8**  
bottom closure

**coupe 8**  
tôle basse de  
calfeutrement  
(raccord de socle)

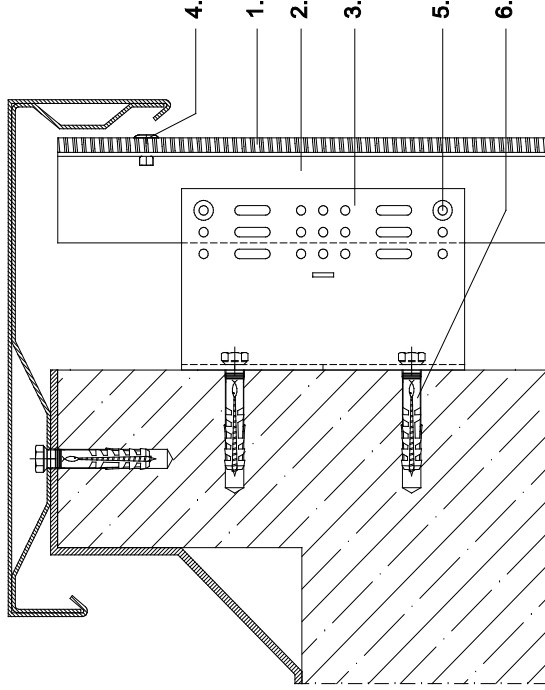


1. Fassadenbekleidung
2. senkrechtcs Tragprofil
3. Systea L-Wandkonsole
4. Befestigungsniel
5. Verbindungsniel
6. Verankerung
7. Abschlusswinkel mit Beilüftung
8. Wandwinkel

1. cladding panel
2. vertical holding track
3. Systea L-bracket
4. fixing rivet
5. connecting rivet
6. fixing
7. base angle with ventilation system
8. wall angle

1. revêtement de façade
2. profil support vertical
3. équerre en L Systea
4. rivet de fixation
5. jonction
6. ancrage
7. angle avec trou de ventilation
8. angle





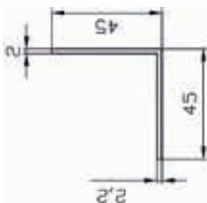
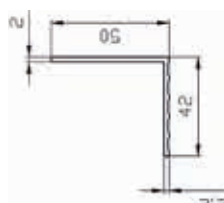
1. Fassadenbekleidung
2. senkrechtes Tragprofil
3. Systea L-Wandkonsole
4. Befestigungsniel
5. Verbindungsniel
6. Verankerung

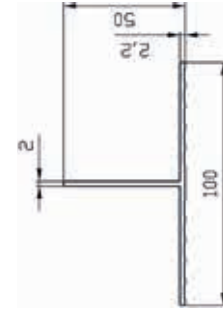
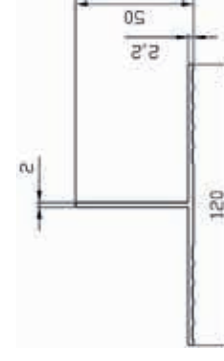
1. cladding panel
2. vertical holding track
3. Systea L-bracket
4. fixing rivet
5. connecting rivet
6. fixing

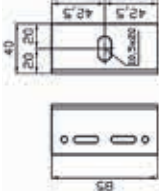
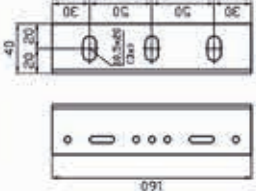
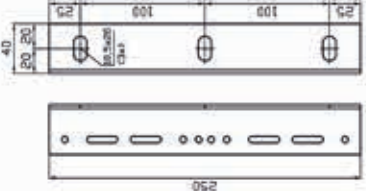

1. revêtement de façade
2. profil support vertical
3. équerre en L Systea
4. rivet de fixation
5. jonction
6. ancrage

Inhaltsverzeichnis Profilübersicht ALWI  
Contents profile list ALWI  
Index ensemble de profil ALWI

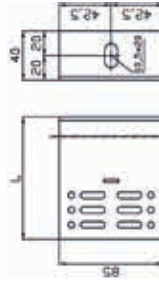
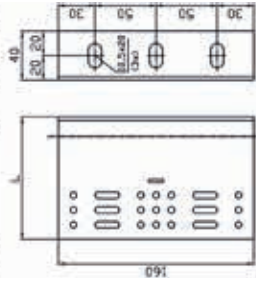
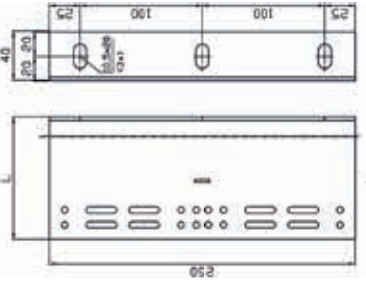

Seite page	Profile	profiles	profilés
01.15	<b>vertikale Tragprofile</b> Winkelprofil 45/45 Wanddicke 2mm prof. Winkelprofil 42/50 Typ I prof.	<b>vertical holding tracks</b> L-profile 45/45 wall thickness 2mm prof. L-profile 42/50 Typ I prof.	<b>rails porteurs verticaux</b> profil L 45/45 épaisseur du mur 2mm prof. profil L 42/50 Typ I prof.
01.16	T-Profil 100/50 prof. T-Profil 120/50 prof.	T-profile 100/50 prof. T-profile 120/50 prof.	profil T 100/50 prof. profil T 120/50 prof.
01.17	<b>L-Wandkonsolen</b> WB 0 - 85/160/250mm	<b>L-brackets</b> WB 0 - 85/160/250mm	<b>équerres en L</b> WB 0 - 85/160/250mm
01.18	WB 1-6 - 85/160/250mm	WB 1-6 - 85/160/250mm	WB 1-6 - 85/160/250mm
01.19	WB 7-9,5 - 85/160/250	WB 7-9,5 - 85/160/250	WB 7-9,5 - 85/160/250
01.20	WB 10-14 - 85/160/250mm	WB 10-14 - 85/160/250mm	WB 10-14 - 85/160/250mm

Profiltyp profile type type de profil	Länge (mm) length (mm) longueur (mm)	Material material matériau	Einzelpreis unit price prix unitaire
 <p>Winkelprofil 45/45 Wanddicke 2mm prof. L-profile 45/45 wall thickness 2mm prof. profilé L 45/45 épaisseur du mur 2mm prof.</p>	5600	EN AW 6063 T66	
	6000		
 <p>Winkelprofil 42/50 Typ I prof. L-profile 42/50 Typ I prof. profilé L 42/50 Typ I prof.</p>	3000	EN AW 6063 T66	
	6000		

Profiltyp profile type type de profil	Länge (mm) length (mm) longueur (mm)	Material material matériau	Einzelpreis unit price prix unitaire
 <p>T-Profil 100/50 prof. T-profile 100/50 prof. profilé T 100/50 prof.</p>	3000	EN AW 6063 T66	
	5600		
 <p>T-Profil 120/50 prof. T-profile 120/50 prof. profilé T 120/50 prof.</p>	3000	EN AW 6063 T66	
	5600		
	6000		

Profiltyp profile type type de profil	Länge (mm) length (mm) longueur (mm)	Material material matériau	Einzelpreis unit price prix unitaire
   	WB0 40/40/3-85	EN AW 6063 T66	
	WB0 40/40/3-160	EN AW 6063 T66	
	WB0 40/40/3-250	EN AW 6063 T66	

WB0 40/40/3 - 85/160/250mm

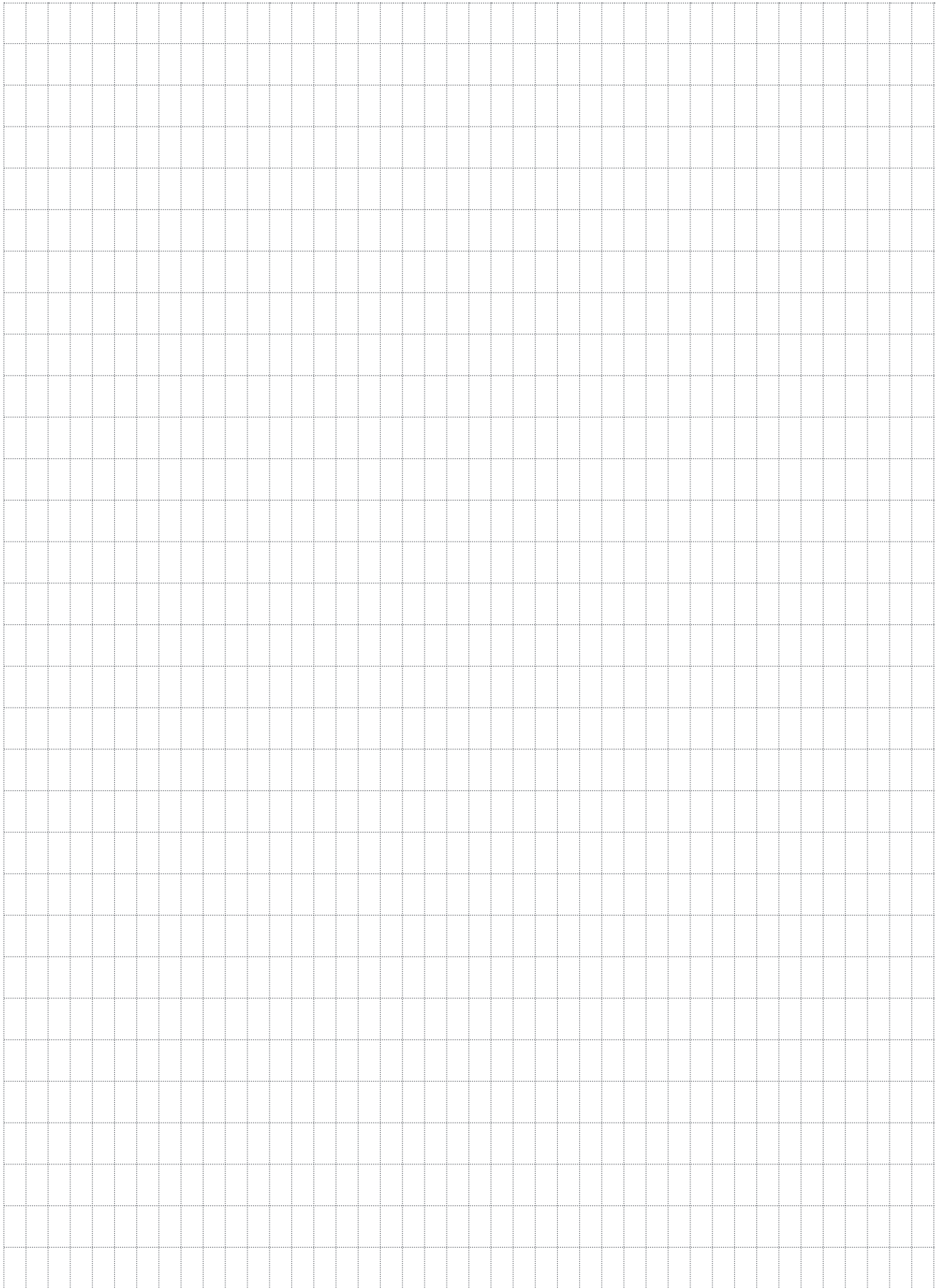
Profiltyp profile type type de profil	Länge (mm) length (mm) longueur (mm)	Material material matériau	Einzelpreis unit price prix unitaire
   	WB1 40/60/3-85 WB2 40/80/3-85 WB3 40/100/3-85 WB4 40/120/3-85 WB5 40/140/3-85 WB6 40/160/3-85	EN AW 6063 T66	
	WB1 40/60/3-160 WB2 40/80/3-160 WB3 40/100/3-160 WB4 40/120/3-160 WB5 40/140/3-160 WB6 40/160/3-160	EN AW 6063 T66	
	WB1 40/60/3-250 WB2 40/80/3-250 WB3 40/100/3-250 WB4 40/120/3-250 WB5 40/140/3-250 WB6 40/160/3-250	EN AW 6063 T66	

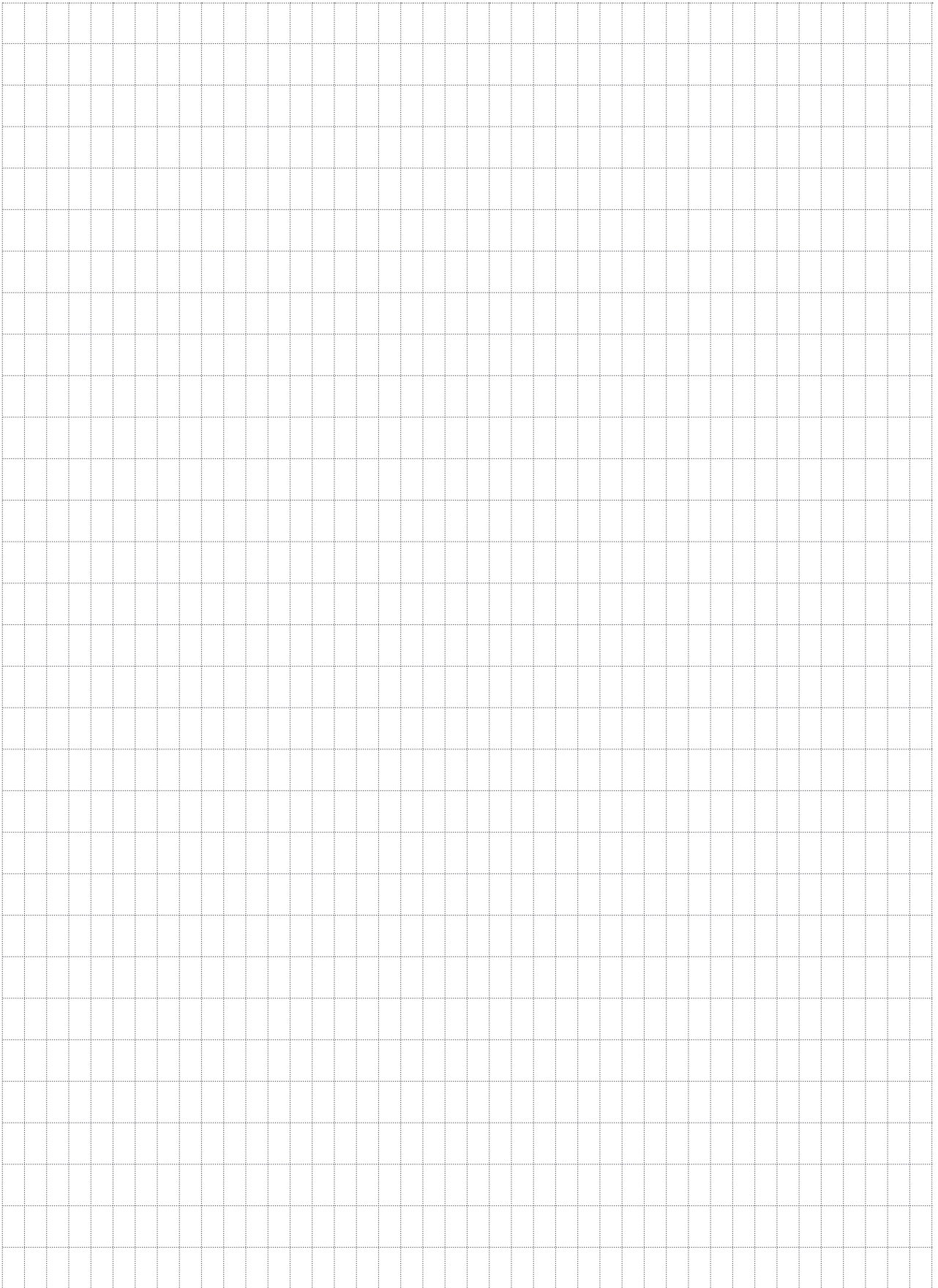
L-Wandkonsole L-bracket équerre en L	Länge L length L longueur L
WB1	60 mm
WB2	80 mm
WB3	100 mm
WB4	120 mm
WB5	140 mm
WB6	160 mm

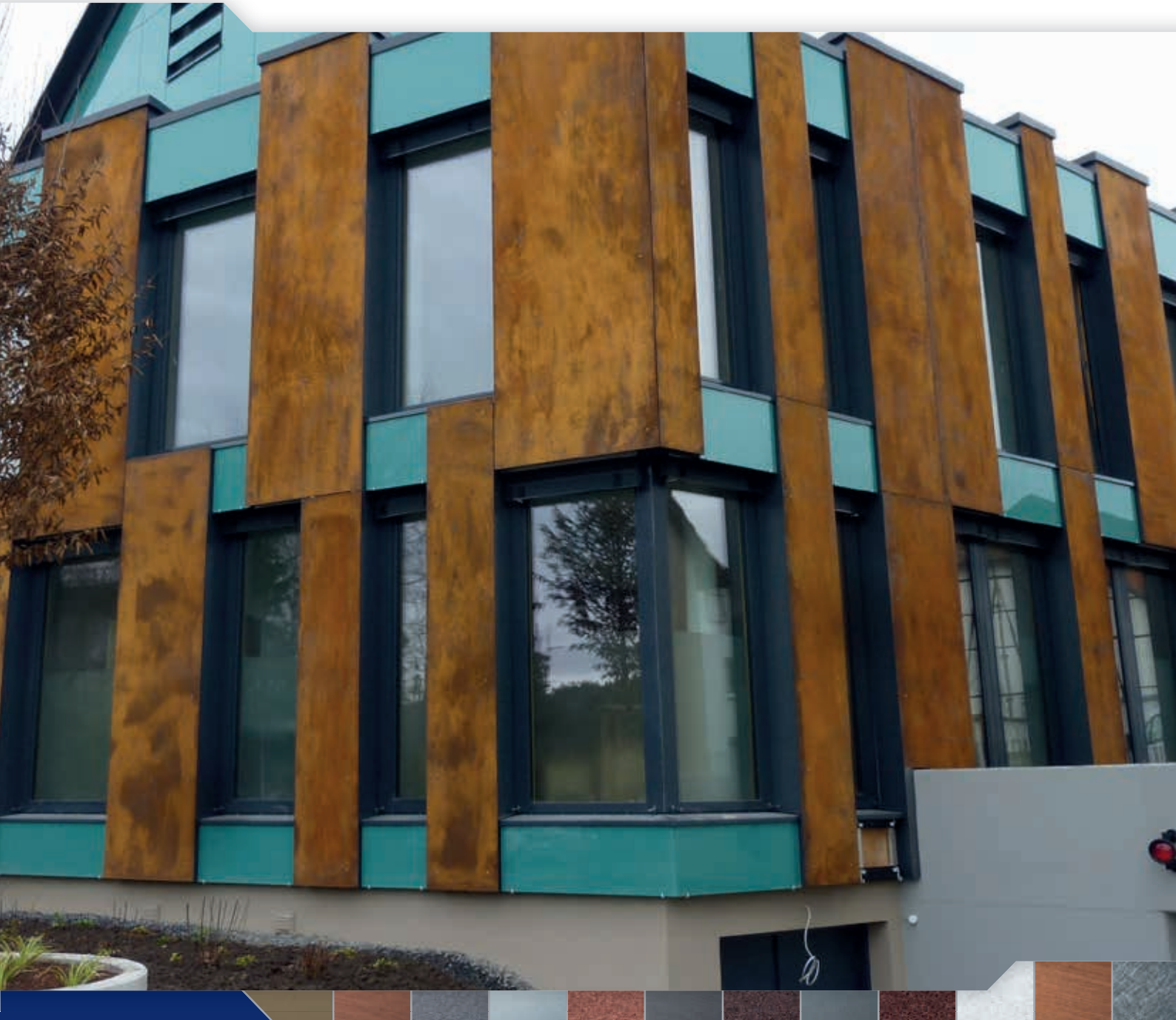
WB 1-6 - 85/160/250mm

Profiltyp profile type type de profil	Länge (mm) length (mm) longueur (mm)	Material material matériau	Einzelpreis unit price prix unitaire												
	WB7 40/180/4/3-85 WB8 40/200/4/3-85 WB8.5 40/210/4/3-85 WB9 40/220/4/3-85 WB9.5 40/230/4/3-85	EN AW 6063 T66													
	WB7 40/180/4/3-160 WB8 40/200/4/3-160 WB8.5 40/210/4/3-160 WB9 40/220/4/3-160 WB9.5 40/230/4/3-160	EN AW 6063 T66													
	WB7 40/180/4/3-250 WB8 40/200/4/3-250 WB8.5 40/210/4/3-250 WB9 40/220/4/3-250 WB9.5 40/230/4/3-250	EN AW 6063 T66													
<table border="1"> <thead> <tr> <th>L-Wandkonsole L-bracket équerre en L</th> <th>Länge L length L longueur L</th> </tr> </thead> <tbody> <tr> <td>WB7</td> <td>180 mm</td> </tr> <tr> <td>WB8</td> <td>200 mm</td> </tr> <tr> <td>WB8.5</td> <td>210 mm</td> </tr> <tr> <td>WB9</td> <td>220 mm</td> </tr> <tr> <td>WB9.5</td> <td>230 mm</td> </tr> </tbody> </table>				L-Wandkonsole L-bracket équerre en L	Länge L length L longueur L	WB7	180 mm	WB8	200 mm	WB8.5	210 mm	WB9	220 mm	WB9.5	230 mm
L-Wandkonsole L-bracket équerre en L	Länge L length L longueur L														
WB7	180 mm														
WB8	200 mm														
WB8.5	210 mm														
WB9	220 mm														
WB9.5	230 mm														
<p>WB7-9.5 - 85/160/250mm</p>															

Profiltyp profile type type de profil	Länge (mm) length (mm) longueur (mm)	Material material matériau	Einzelpreis unit price prix unitaire												
	WB10 43/240/4/3-85 WB11 43/260/4/3-85 WB12 43/280/4/3-85 WB13 43/300/4/3-85 WB14 43/320/4/3-85	EN AW 6063 T66													
	WB10 43/240/4/3-160 WB11 43/260/4/3-160 WB12 43/280/4/3-160 WB13 43/300/4/3-160 WB14 43/320/4/3-160	EN AW 6063 T66													
	WB10 43/240/4/3-250 WB11 43/260/4/3-250 WB12 43/280/4/3-250 WB13 43/300/4/3-250 WB14 43/320/4/3-250	EN AW 6063 T66													
<table border="1"> <thead> <tr> <th>L-Wandkonsole L-bracket équerre en L</th> <th>Länge L length L longueur L</th> </tr> </thead> <tbody> <tr> <td>WB10</td> <td>240 mm</td> </tr> <tr> <td>WB11</td> <td>260 mm</td> </tr> <tr> <td>WB12</td> <td>280 mm</td> </tr> <tr> <td>WB13</td> <td>300 mm</td> </tr> <tr> <td>WB14</td> <td>320 mm</td> </tr> </tbody> </table>				L-Wandkonsole L-bracket équerre en L	Länge L length L longueur L	WB10	240 mm	WB11	260 mm	WB12	280 mm	WB13	300 mm	WB14	320 mm
L-Wandkonsole L-bracket équerre en L	Länge L length L longueur L														
WB10	240 mm														
WB11	260 mm														
WB12	280 mm														
WB13	300 mm														
WB14	320 mm														
<p>WB10-14 - 85/160/250mm</p>															







# Systema<sup>®</sup>

## Systema Pohl GmbH

Margarete-Steiff-Str. 6  
D-24558 Henstedt-Ulzburg  
Deutschland / Germany

Fon: +49 (0) 41 93 / 99 11-0  
Fax: +49 (0) 41 93 / 99 11-49

info@systema.systems  
www.systema.systems



Bitte besuchen Sie uns für weitere  
technische Informationen und  
eine Vielzahl von Referenzen  
im Internet: [www.systema.systems](http://www.systema.systems)

Ein Unternehmen der  
POHL-Gruppe