

# Certificate

## Certified Passive House component

for cool, temperate climate, valid until 31.12.2016

Passive House Institute  
Dr. Wolfgang Feist  
64283 Darmstadt  
GERMANY

Category: **Facade anchor**  
Manufacturer: **SYSTEPA Pohl GmbH**  
**24558 Henstedt-Ulzburg, GERMANY**  
Product name: **Systea-Tekofix Wandkonsole**

The following criteria were used in awarding this certificate:

### Efficiency Criterion

In two typical applications\*, the construction fulfills the requirements of

$$\Delta U_{WB} \leq 0.010 \text{ W/(m}^2\text{K)}$$

### Comfort Criterion

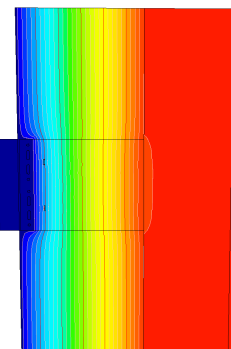
The inner surface must be warm enough to prevent mould as well as uncomfortable down-draught and radiation losses.

$$\theta_{i,min} \leq 17^\circ\text{C}$$

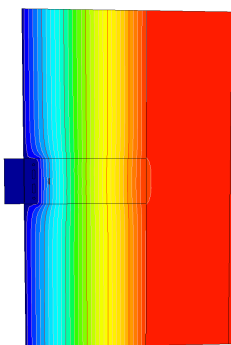
### Thermal data of the certified component

Systea-Tekofix Wandkonsole	thermal bridge coefficient $\chi$ [W/K]	minimum inner surface temperature $\theta_{i,min}$ [°C]
Sliding point / fixed point H300	0.0026	19.45
Sliding point / fixed point H200	0.0017	19.46
Sliding point / fixed point H100	0.0009	19.47

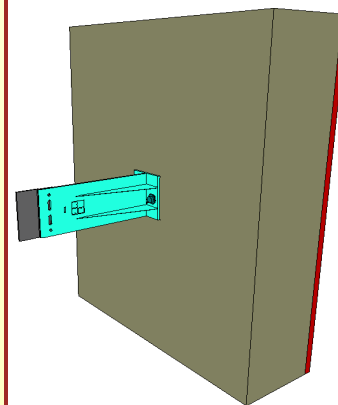
\* The criterion has been validated with two representative buildings: a row house and a school building.



Isothermal map of the fixed point H200



Isothermal map of the sliding point H100



Representation of the fixed point H100



**CERTIFIED COMPONENT**

Passive House Institute